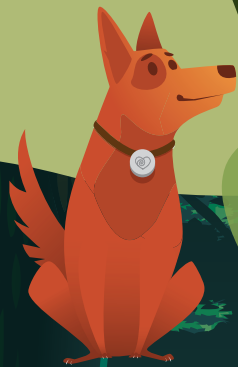


Manawa i te Wao Tūmatarau

Manawa in the Magic Forest



Math Game

1
START

2

3

4

What's 5+6?

5

WOOHOO!
Manawa has
found a shortcut,
go forward
two spaces

6

7

What's 2x8?

8

9

10

WOOHOO!
Manawa has
found a shortcut,
go forward
two spaces

11

12

13

How many
1s are in 20?

14

15

What's
10+5+10?

16

17

Uh oh Manawa
has slipped
over a fallen
tree! Go back
three spaces.

18

19

Count by
fives to 50

20

21

Count by
tens to 100

22

23

24

WOOHOO!
Manawa has
found a shortcut,
go forward
two spaces

25

What's 5x2?

29

28

What's 9x10?

27

26

30

What's 5x5?

31

32

33

What's 10+8?

34

35

36

What's 2x7?

37

UH OH Manawa
has slipped over
a fallen tree!
Go back three
spaces!

38

39

WOOHOO!

You've helped Manawa
make it safely

WhaiRawā

Ngā
Kaitiaki
Moni

MONEY GUARDIANS



Manawa i te Wao Tūmatarau

Manawa in the Magic Forest

Math Game

Instructions!

Manawa needs help getting through the magic forest so that he can get back to his kaitiaki. This is a great way to practice your maths to see if you can get Manawa back safely!

What you need

- ☐ Two of your whānau members or friends (three player game)
- ☐ One dice
- ☐ A chosen game piece for each player (find something from home like a toy or paper clip)

How to play

The first player tosses the dice, counts out that number on the pathway with their game piece and must answer the question you land on.

If you don't land on a question you are safe for that round. If you answer the question incorrectly you must move back one space.

Answers:
4. 11 / 7. 16 / 13. 20 / 15. 25
19. 5, 10, 15, 50, 25, 30, 35, 40, 45, 50
21. 10, 20, 30, 40, 50, 60, 70, 80, 90, 100
25. 10 / 28. 90 / 30. 25 / 33. 18 / 36. 14