



IN THIS ISSUE

Colouring in competitions

Games and activities

*Plus so much to do over
your summer break!*

NGĀ KAITIAKI MONI PUKAMAHI

mō te Raumati

Here you will find games
and activities to keep you
entertained all summer long!

**BUMPER
EDITION**

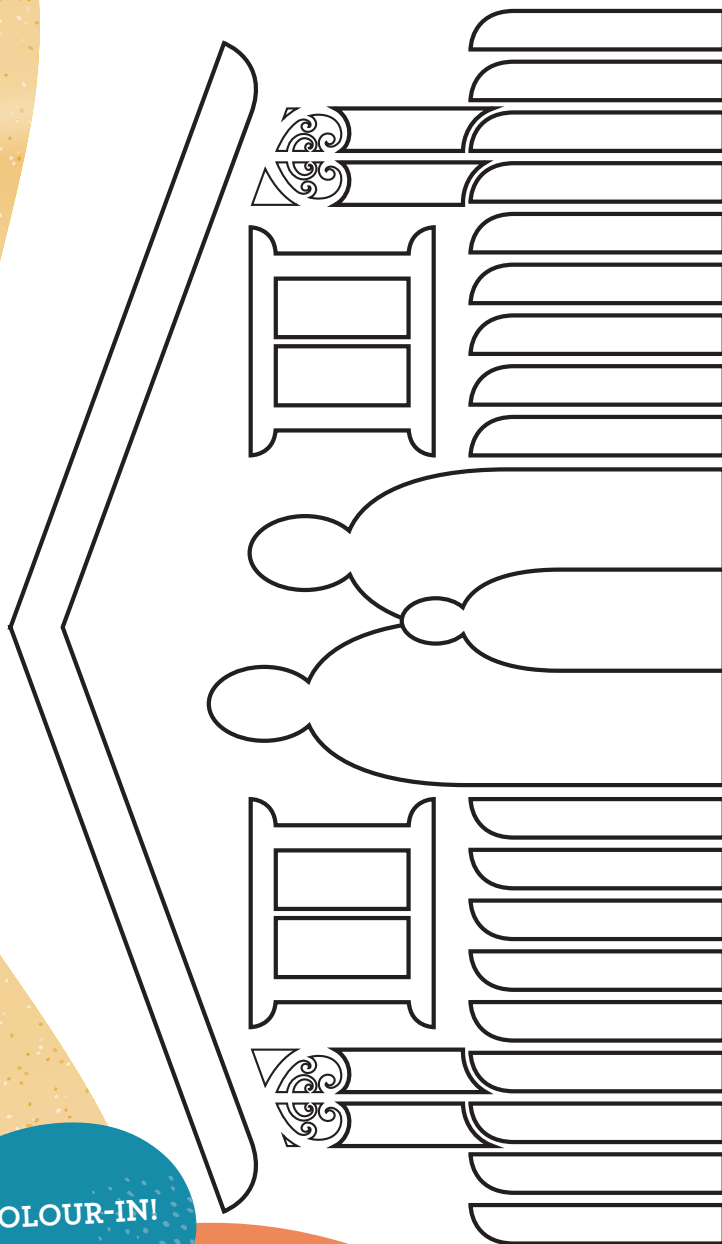
NAU MAI, TAUTI MAI TO YOUR SUMMER FUN PUKAMAHI!

We've got heaps of fun activities and games for you to enjoy over the summer holidays. We've also got colouring in competitions for you to complete, so look out for those.

We hope you have an amazing raumati e hoa mā!



TAHI
one



COLOUR-IN!

Send us a photo of your art and be in
to win a Ngā Kaitiaki Moni goodie bag!



Ask a whānau member to take a photo of your picture and post it on our Facebook page www.facebook.com/whairawa with the hashtag #kaitiakikid or upload it to our website www.whairawa.com/tamariki/panui

Competition closes **Friday, 30th January 2026**.

General Giveaway Terms can be found here: www.whairawa.com/tamariki/general-terms-for-giveaways

SAVING
For your future!

RUA
two

5-8 TAU
ages 5-8



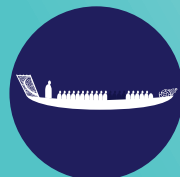
Waka

Dollar Sign

Bank Note

Piggy Bank

Coins



MATCHING GAME

Match the word with the correct picture!

?

1

If you have \$10 at the dairy and you want to buy milk for \$3 and an ice cream for \$2, how much money do you have left?

- ☐ \$2
- ☐ \$4
- ☐ \$5

2

How many 50c coins are in \$2?

- ☐ 5
- ☐ 4
- ☐ 10

3

How many different New Zealand bank notes are there?

- ☐ 5
- ☐ 7
- ☐ 3

4

What is the highest value NZ coin?

- ☐ \$5
- ☐ \$2
- ☐ \$1

5

If you saved \$10 a week for 4 weeks, how much would you have saved?

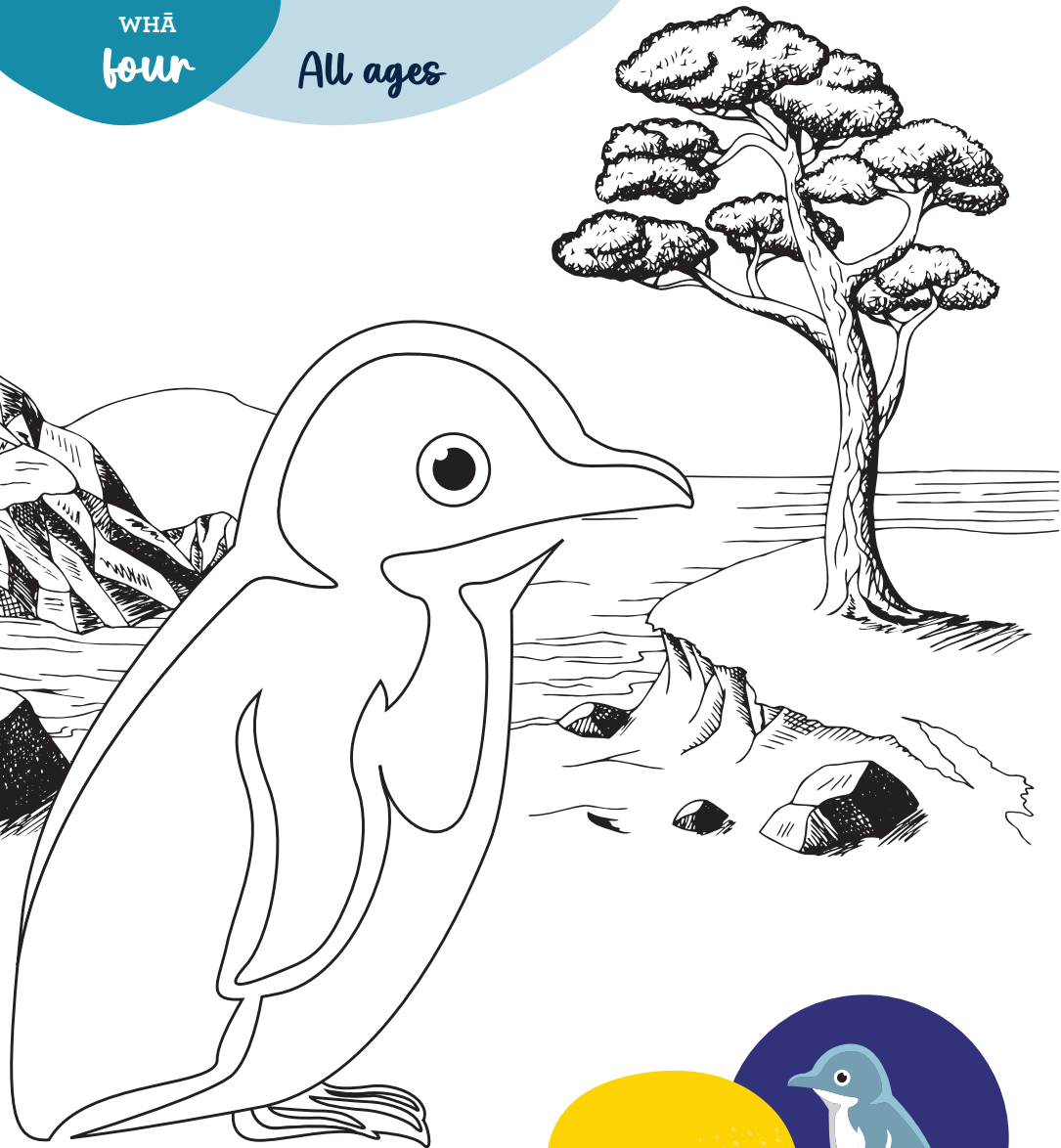
- ☐ \$28
- ☐ \$40
- ☐ \$44



JUNIOR MONEY QUIZ

WHĀ
four

All ages



COLOUR-IN!



KORORĀ

The Little Blue Penguin



Send us a photo of your art and be in to win a Ngā Kaitiaki Moni goodie bag!

Ask a whānau member to take a photo of your picture and post it on our Facebook page www.facebook.com/whairawa with the hashtag #kaitiakitid or upload it to our website www.whairawa.com/tamariki/panui
Competition closes **Friday, 30th January 2026.**

General Giveaway Terms can be found here: www.whairawa.com/tamariki/general-terms-for-giveaways

8-12 TAU
ages 8-12

RIMA
five



Ice cream
Aihikirimi



Sunscreen
Pani Ārai Tikākā



Seashell
Anga



Jandals
Hūrekereke



Fish
Ika



Camera
Kāmera



Sunflower
Puarā



Bumblebee
Pīrorohu



Boat
Waka



Strawberry
Rōpere



Book
Pukapuka



Rātā
Rātā



Bird
Manu



Bucket
Pāketē



Sunglasses
Mōwhiti ārai



Christmas Tree
Rākau Kirihimete



SCAVENGER HUNT

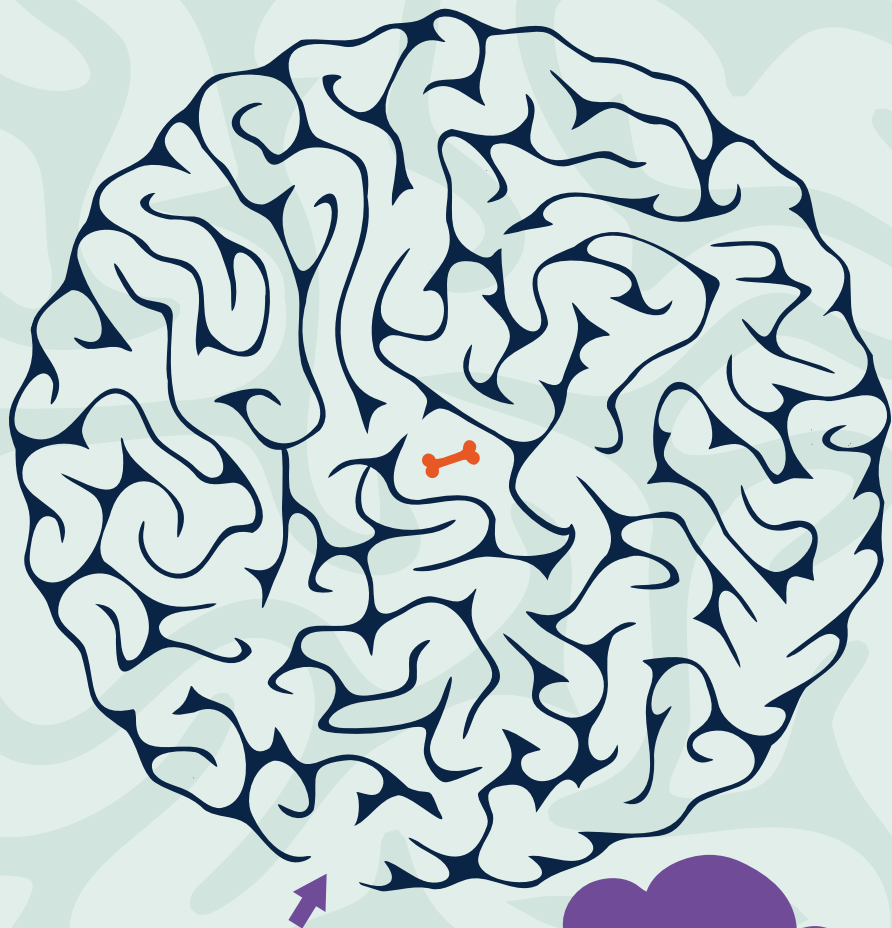
Look for these items outdoors. As you find the items, tick the box!

Write a graphic novel

Start your very own
graphic novel by
filling in these cool
comic strips!



TO BE CONTINUED...



Kia ora Tamariki mā
Starting at the purple
arrow, see if you can
help me find the way
to my bone!

THE MAZE





1

If you have \$1,000,000,000 you are a:

- ☐ Millionaire
- ☐ Billionaire
- ☐ Trillionaire

2

How many different currencies are there in the world?

- ☐ Over 50
- ☐ Over 100
- ☐ Over 150

3

What is the Māori word for money?

- ☐ Moni
- ☐ Muni
- ☐ Mani

4

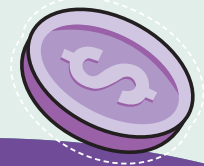
How many 10 cent coins are in a dollar?

- ☐ 8
- ☐ 9
- ☐ 10

5

If you have \$5 at the supermarket but want to buy milk for \$2.50 and bread for \$1.10, how much money do you have left?

- ☐ \$1.40
- ☐ \$1.50
- ☐ \$2.40



MONEY QUIZ

1. Billionaire 2. Over 150 3. Moni 4. 10 5. \$1.40

TEKAU
ten

All ages



KIRIHIMETE Christmas

COLOUR-IN!



Send us a photo of your art and be in to win a Ngā Kaitiaki Moni goodie bag!

Ask a whānau member to take a photo of your picture and post it on our Facebook page www.facebook.com/whairawa with the hashtag #kaitiakikid or upload it to our website www.whairawa.com/tamariki/panui
Competition closes Friday, 30th January 2026.

General Giveaway Terms can be found here: www.whairawa.com/tamariki/general-terms-for-giveaways



8-12 TAU
ages 8-12

TEKAU MĀ TAHI
eleven

COIN CATERPILLARS

Fun Game

Being part of our club means
you can start to learn about saving
so that by the time you reach
16 you will be a great saver!

Here is a fun game to understand
coins and how they add up quickly!



INSTRUCTIONS:

- 1 Cut out the two-dollar, one-dollar, fifty-cent, twenty-cent and ten-cent coins, located at the bottom of this page.
- 2 Arrange the coins in wiggly lines on a piece of paper and draw legs and antennae to make 'coin caterpillars'.
- 3 Try and make a coin caterpillar for these amounts:
\$1.20 \$4.80 \$2.50 \$6.90
- 4 Add up the value of each coin caterpillar.
If you get stuck, ask a whānau member to help you count!



TEKAU MĀ RUA

twelve

All ages



WHĀNAU

Picnic

COLOUR-IN!



Send us a photo of your art and be in to win a Ngā Kaitiaki Moni goodie bag!

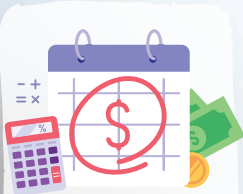
Ask a whānau member to take a photo of your picture and post it on our Facebook page www.facebook.com/whairawa with the hashtag #kaitiakitikid or upload it to our website www.whairawa.com/tamariki/panui
Competition closes Friday, 30th January 2026.

General Giveaway Terms can be found here: www.whairawa.com/tamariki/general-terms-for-giveaways

WHAT IS MONEY?

Moni (money) is given to people for doing mahi. An example of this is helping your whānau with chores and getting pocket money.

Moni can be given in coins or notes, and they are used to buy things. You may have seen your whānau or others using coins or notes to buy food or other items at the store.



MONEY IN

Work – salary
or wages

Government
support

Business
income



MONEY OUT

Food

Power

Rent/Mortgage

Clothes

WHERE DOES MONEY COME FROM?

Working

Koha

Pocket Money

HOW DO YOU LOOK AFTER MONEY?

Use a money box

Open a savings account

An investment fund
like Whai Rawa



BASIC MONEY Concepts

For more head to our
website and read our
Pocket Money Guide –
[www.whairawa.com/
tamariki/guides](http://www.whairawa.com/tamariki/guides)



Have a safe summer tamariki mā!

We have heaps more resources and activities on our website – if you run out of things to do here head to www.whairawa.com/tamariki/activities

Tūhono Mai
To stay connected with us

- » New Zealand freephone
0800 942 472
- » Calling from overseas
+64 3 366 4344
- » You can reach us between
8.30am and 5.00pm Monday to
Friday, except public holidays.
- » Find us online at
www.whairawa.com
- » Find us on
www.facebook.com/whairawa

**We'd love to see what
you're up to!**

You can ask Mum, Dad or a whānau member to post on social media using the hashtag **#kaitiakitiki** for the chance to win some awesome prizes.

They can also help you send us a photo of you with your Kaitiaki Moni certificate, playing some of the games or helping your whānau and friends.

**We can't wait to see
what you get up to!**



Ngā Kaitiaki Moni is brought to you by Whai Rawa Fund Limited. Whai Rawa Fund Limited is the issuer of the Whai Rawa Unit Trust. A copy of the Product Disclosure Statement is available at www.whairawa.com/pds.

WhaiRawa NGĀI TAHU